

City of Columbia, Illinois
Agenda for Park & Recreation Advisory Board Meeting
Tuesday, January 28, 2025 – 5:00 p.m.
City Hall, 208 South Rapp Avenue



- A. Call Meeting to Order
- B. Roll Call & Establish Quorum
- C. Approval of Minutes
 - 1. July 23, 2024 Regular Meeting*
- D. Public Input
- E. Unfinished Business
 - 1. Creekside Park Update
 - 2. Update on Bag Toss at Bolm-Schuhkraft Park
- F. New Business
 - 1. Approval of 2024 Parks & Recreation Plan
- G. Staff Reports & Communications
- H. Adjournment

* Denotes supporting document(s) in agenda packet.

MINUTES OF THE PARK & RECREATION ADVISORY BOARD
OF THE CITY OF COLUMBIA, ILLINOIS
HELD TUESDAY, JULY 23, 2024 IN THE CITY HALL AUDITORIUM

A. CALL TO ORDER

The Park & Recreation Advisory Board meeting of the City of Columbia, Illinois held Tuesday, July 23, 2024 was called to order by Chairperson Sarah Clarke at 5:04 P.M.

B. ROLL CALL & ESTABLISH QUORUM

Roll was called with the following attendance noted.

Members Present: Kathi Boyer-Edwards, Sarah Clarke, Lauren Darr, Becky Hunt, Glenn Melching

Members Absent: Chris Grode, Matt Klopmeier, Jerod Merz

Quorum present.

City Staff & Officials Present: Mike Sander (Director of Public Works), Connie Maness (Assistant Planner), Alderman Lauren Nobbe

C. APPROVAL OF MINUTES

Minutes of the Tuesday, June 25, 2024 Parks & Recreation Advisory Board Meeting were submitted for approval.

MOTION: It was moved by Member Melching and seconded by Member Boyer-Edwards to approve the minutes of the Tuesday, June 25, 2024 Park & Recreation Advisory Board meeting. Upon a roll call vote, all members present voted yes. MOTION CARRIED 5-0.

D. PUBLIC INPUT

None.

E. UNFINISHED BUSINESS

1. Discussion of Preliminary Dog Park Proposal

Lauren Nobbe presented the preliminary dog park proposal to the Board. There was discussion on the proposal and other information on the development of the park.

F. NEW BUSINESS

None.

G. STAFF REPORTS & COMMUNICATIONS

Mr. Sander announced that the ladder jacks have been ordered and asked for the Board's opinion on where they should be placed. The Board agreed that they should be by the bag toss.

H. ADJOURN

With no further business to discuss, Chairperson Clarke entertained a motion to adjourn.

MOTION: Motion to adjourn was made by Vice-Chairperson Darr and seconded by Member Melching. Upon a voice vote, all members present voted yes. MOTION CARRIED 5-0

The meeting adjourned at 6:00 P.M.

UNAPPROVED

PARKS AND RECREATION PLAN

ADDENDUM TO THE COMPREHENSIVE PLAN 2024
LOOKING TO THE FUTURE



CITY OF COLUMBIA





CONTENTS

- PARKS & RECREATION
- STRATEGIES AND LOCAL ACTION RECOMMENDATIONS
- PARKS & RECREATION CAPITAL IMPROVEMENTS PLAN (CIP)

PARKS AND RECREATION

GOAL

Create quality parks, open space, and recreation opportunities that are accessible to all ages and abilities.

Strategy 1: Increase community awareness of park and recreation amenities, facilities, and programming.

Strategy 2: Improve parks and recreation facility appearance and maintenance.

Strategy 3: Expand recreational programs and amenities for all.

Strategy 4: Plan for a connected and accessible park system to support community growth.

Strategy 5: Identify dedicated revenue sources to support enhanced park and recreation maintenance, operation, and programming.

Strategy 6: Strengthen partnerships with regional, county, and local agencies and organizations.

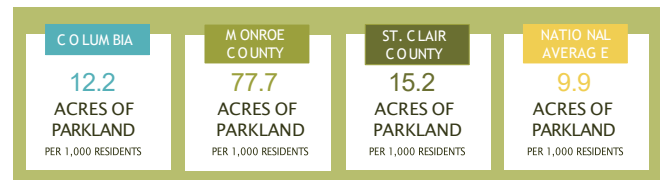
Strategy 7: Establish a Parks & Recreation Department.

CONTEXT

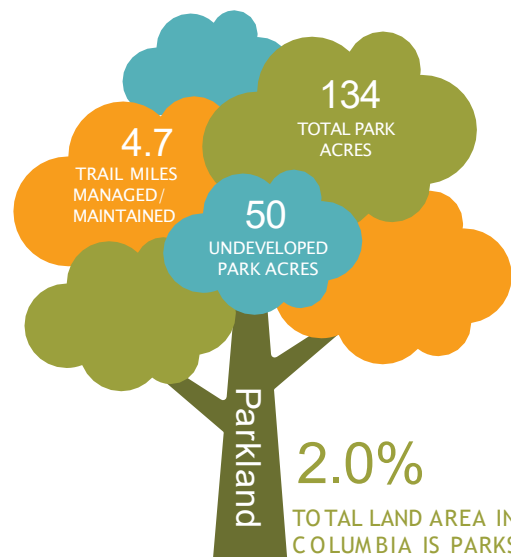
Accessible and plentiful recreation opportunities create physically and mentally healthier communities. Parks serve as an excellent opportunity for recreation and leisure and provide a range of purposes, including:

- health and environmental benefits,
- economic value, and
- enhanced cultural identity.

Parks also help preserve and protect the environment. Many of these facilities have resiliency in mind as communities face increasing challenges and impacts



Source: GIS, US Census 2020, and National Parks and Recreation Association 2021



Source: City of Columbia and GIS 2022

88% of Community survey respondents said, 'Connect trails to parks, neighborhoods, City facilities, schools, and retail' is very important.





of our changing weather patterns. Parks can serve as multi-benefit landscapes that protect against flooding, clean and filter stormwater, produce shade, and prevent heat island effects.

INSIGHT

Park & Trail System

Columbia residents enjoy approximately 84 acres of developed parkland across eight parks (including the future Creekside Park), equating to 12.2 acres per 1,000 residents. This figure is higher than the national average of 9.9 acres of parkland per 1,000 residents.

Columbia's park system includes:

- Admiral Trost Park
- American Legion Park
- Bolm-Schuhkraft Memorial Park
- Meadowridge Park
- Metter Memorial Park
- Stone Arch Park
- Creekside Park (Future)

The parks include 4.7 miles of internally managed and maintained trails. The largest and most well-known trail in Columbia is the GM&O Heritage Trail. Other trails that cross through Columbia include the cross-country American Discovery Trail and Mississippi River Trail.

National standards suggest providing neighborhood parks within a half-mile (the equivalent of a 10-minute walk) radius to residential properties. However, the Trust for Public Land reports only 33 percent of Columbia residents live within that 10-minute walk metric (this does not include the future planned Creekside Park). The national average is 55 percent. Similar reports by the AARP indicate that 71 percent of Columbia residents have accessible exercise opportunities within three miles of their homes. This statistic is lower than the median U.S. neighborhood, of which 90.7 percent have that level of accessibility.



* Includes a wide variety of parks, trails, and open space so long as there is no barrier to entry for any portion of the population.

Examples of parks includes:

- Publicly owned local, state, and national parks, trails, and open space
- School with a joint-use agreement with the local government
- Privately-owned parks that are managed for full public use

Source: The Trust for Public Land, 10-minute walk, 2020



Source: AARP, 2018

Park Governance

Recreation and leisure programming largely fall under the responsibility of the Park & Recreation Advisory Board. The Park & Recreation Advisory Board reviews the park system and recreation programs and makes recommendations to City Council. The Community Development Department

Community survey respondents identified programming to encourage greater park use, such as paved walking and biking trails, splashpad(s), youth programs and leagues, a dog park, and community events and festivals.





oversees long-term planning, policy development, event planning, and special event/ use permits. Additionally, the department provides staff support to the Park & Recreation Advisory Board and serve as the City's liaison with local recreational program providers. The Public Works Department oversees park and trail capital planning and improvements, general system maintenance, such as lawn care, equipment management, and trash removal. Currently, Public Works hires seasonal employees to help with lawn care and general maintenance during the summer when more maintenance is needed. Columbia does not have a dedicated Parks and Recreation Department.



Source: City of Columbia
Annual Parks and
Recreation Report,
FY 2020

Funding

The largest funding stream for the Parks system is the Video Gaming Tax Revenue, which is generated from the gambling income. According to the 2022 Fiscal Year, Video Gaming Tax revenues were \$162,970. It does not fully fund park operations, but it is currently the only dedicated funding stream. Additional revenue includes park shelter reservations.

Programs, Amenities, & Facilities

Columbia's parks provide mostly outdoor amenities, including sports courts and fields, disc golf, sand

volleyball, playgrounds, and community event space.

Bolm-Schuhkraft and Metter Memorial Park primarily serve the needs of City events. Bolm-Schuhkraft and Metter Memorial Park house the most recreational amenities as the two most utilized parks in the community.



Residents can rent the eight pavilions for events. The 2020 department reports indicate there were 126 reservations between the pavilion locations, which generated over \$3,900 in revenue that year. For the 2022 Fiscal Year, shelter reservations generated \$7,165 in revenue.

Partnerships

The City of Columbia maintains strong relationships with the school district (CUSD 4), Oerter Soccer Park, Monroe County YMCA, the Columbia Athletics Association (CAA), Columbia Soccer Club, CREW



Soccer Club, and other private sports organizations for non-city owned recreational amenities.

The Columbia Athletics Association (CAA) primarily oversees recreational and competitive leagues throughout the community. The CAA is a non-profit organization that provides youth baseball and softball teams with leagues, tournaments, and practice fields.

Columbia has an ongoing three-way agreement with the Columbia Athletics Association and the school district to share park usage. In addition, the Columbia Blue Jays Football Association serves as a private youth football club to the city and has a home field at Bolm-Schuhkraft Memorial City Park.

Partnerships with Boy Scouts and other businesses around town provide volunteers to paint and help with general labor. Recently, there has been a demand for more organized volunteer opportunities, such as adopting a road.

TRENDS & FORESIGHT

The renewed interest in parks, trails, and walkable environments are positives gleaned from the pandemic and a trend predicted to continue long-term. The expansion of pedestrian spaces in dense urban areas, the growth of outdoor dining on urban streets, the conversion of roads to bike lanes and trails, and the installation of “parklets” in parking spaces and former travel lanes have opened all kinds of possibilities for new types of urban parks.

One of the strongest emerging trends for parks and recreation is the focus on health and health equity. The COVID-19 pandemic magnified this trend with skyrocketing social isolation and loneliness rates. This trend will continue well beyond the pandemic and intertwine with a greater emphasis on meeting communities' social needs with a holistic focus on well-being and access to parks and green spaces. The director of health for the National Recreation



and Parks Association (NRPA) believes parks and recreation will play an increased role in supporting mental health and well-being. Strong cross-sector partnerships with public health departments, school systems, and social service agencies will be essential.

How residents want to use parks and recreation facilities is also changing. Recent trends include drone racing and gaming in parks, pickleball, and axe throwing. In addition, multigenerational recreation and leisure activities are also growing as older generations desire more active retirements for themselves and how they spend time with grandchildren.

Metro East Park and Recreation District (MEPRD)

As Columbia grows into St. Clair County, the city may have the opportunity to utilize the funding and support of the Metro East Park and Recreation District. Servicing Madison and St. Clair Counties in Illinois, the Metro East Park and Recreation District primarily develops a public system of interconnecting parks and trails. Many surrounding communities within Madison and St. Clair Counties can use MEPRD's grant funding opportunities to better their park systems. Currently, the MEPRD collects 1% sales tax in the St. Clair County portion of Columbia.

Future Funding Mechanisms

Communities around the country use different funding mechanisms as dedicated revenue streams to support their parks and recreation programs. For example, a parkland dedication or fee-in-lieu allows the city to ensure land is directly dedicated towards parks within the community or fees that directly support existing parks.

Other funding mechanisms include a dedicated sales tax or another tax-dedicated revenue source, whether that is gaming revenue or something else entirely. Another potential avenue, a development impact fee, is a one-time charge assessed to new development to help pay for new or expanded public facilities.

Regional Recreational Draw

Columbia has unique regional recreational opportunities. With access to two nationally known



trails, the Mississippi River Trail and American Discovery Trail, Columbia can become a more active trail town by providing resources and a welcoming community for hikers. Conversely, Columbia's parks and trail system can become branded towards a cyclist community.

Additionally, ecotourism has grown in popularity in the face of climate change and with the rise of responsible tourism. Ecotourism is a form of tourism involving responsible travel (using sustainable transport) to natural areas, conserving the environment, and improving the well-being of the local people. Columbia's wetlands and surrounding floodplain areas could become regional ecotourism areas, similar to the existing Admiral Trost Park.

Finally, with the need for additional youth sports and programming, and based on geographical location, Columbia has the opportunity to establish a regional sports complex.

STRATEGIES AND LOCAL ACTIONS

GOAL:

Create quality parks, open space, and recreation opportunities that are accessible to all ages and abilities.

STRATEGY 1

Increase community awareness of park and recreation amenities,

LOCAL ACTIONS:



EDUCATION & OUTREACH

- Use existing City communication channels to spotlight and promote park facilities and amenities.



PRACTICE IMPROVEMENTS

- Create “Story Book” signs in parks and along trails to highlight Columbia’s history and park information.
- Incorporate public art into the parks and trails.



PARTNERSHIP & COLLABORATION

- Partner with the Columbia School District, Columbia Public Library, and private schools to encourage the use of public parks for recreational and educational activities.

GOAL :

Create quality parks, open space, and recreation opportunities that are accessible to all ages and abilities.

STRATEGY 2

Improve parks and recreation facility appearance and maintenance.

LOCAL ACTIONS:**EDUCATION & OUTREACH**

- Publicize progress on park maintenance and facility upgrades.

**PRACTICE IMPROVEMENTS**

- Hire the necessary full-time, part-time, or seasonal staff to ensure there is sufficient support to provide high-quality, ongoing maintenance.

**PLAN DEVELOPMENT**

- Regularly update the Capital Improvement Programs (CIP) for the individual parks to prioritize maintenance needs.

**INVENTORY, ASSESSMENT, OR SURVEY**

- Regularly survey facility conditions.

**FACILITIES OR INFRASTRUCTURE IMPROVEMENTS**

- Improve lighting throughout the park and trail system.
- Follow the Capital Improvement Programs (CIP) for each park to address maintenance issues.
- Upgrade facilities to ensure ADA compliance.

1

2

3

4

5

6

7

8

9

GOAL :

Create quality parks, open space, and recreation opportunities that are accessible to all ages and abilities.

STRATEGY 3

Expand recreational programs and amenities for all.

LOCAL ACTIONS:



PRACTICE IMPROVEMENTS

- Ensure all Columbia playgrounds include all-inclusive play equipment.



PARTNERSHIP & COLLABORATION

- Strengthen partnerships with schools, community organizations, youth sports organizations, and other recreation agencies to expand program offerings for all ages.



INVENTORY, ASSESSMENT, OR SURVEY

- Conduct a feasibility study for an amphitheater.
- Evaluate gaps in recreation programs and identify what future facilities and programs would fill those needs.
- Assess opportunities to enhance ecotourism and nature-based experiences to serve as a regional draw and amenity.



PROGRAMS OR SERVICES

- Increase youth and senior programming options to include such activities as drone racing, field hockey, and park yoga or stretching.



FACILITIES OR INFRASTRUCTURE IMPROVEMENTS

- Create an off-leash dog park.
- Construct a splash pad as a low-maintenance water and recreation feature.
- Identify locations and best use for sensory gardens.

GOAL :

Create quality parks, open space, and recreation opportunities that are accessible to all ages and abilities.

STRATEGY 4

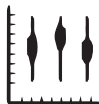
Plan for a connected and accessible park system to support community growth.

LOCAL ACTIONS:



PRACTICE IMPROVEMENTS

- Plan neighborhood developments with a 10-minute walkable access to parks and trails.



POLICY & CODE ADJUSTMENT

- Implement National Recreation and Park Association best practices.



INVENTORY, ASSESSMENT, OR SURVEY

- Evaluate gaps in the existing trail networks to identify areas that lack access to parks.

1

2

3

4

5

6

7

8

9

GOAL :

Create quality parks, open space, and recreation opportunities that are accessible to all ages and abilities.

STRATEGY 5

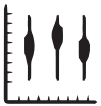
Identify dedicated revenue sources to support enhanced park and recreation maintenance, operation, and programming.

LOCAL ACTIONS:



PRACTICE IMPROVEMENTS

- Maintain existing gaming revenue sources.
- Consider user fees, where appropriate, to provide funding sources for maintenance and operation of costly indoor or outdoor recreation facilities.
- Consider utilizing the City's bonding capacity to raise capital for development, repair, and improvements to the park system.



POLICY & CODE ADJUSTMENT

- Consider establishing a parkland dedication ordinance requiring private developers to dedicate park/open space or pay fees toward future park development.



PARTNERSHIP & COLLABORATION

- Identify potential foundations for partnership and charitable support of local recreation needs.
- Evaluate existing cooperative use agreements with the Columbia Athletic Association (CAA) and Columbia Blue Jays to ensure mutual benefit and reasonable shared support of facility maintenance, operation, and programming.
- Identify opportunities to expand cooperative use agreements to support City recreation needs.
- Consider lease or purchase financing opportunities with separate, external entities to increase recreation programming, facilities, and amenities.
- Strengthen the relationship between the City and Columbia PLAY Foundation and collaborate to develop on capital fundraising campaigns for major park amenities.



INVENTORY, ASSESSMENT, OR SURVEY

- Identify grant opportunities for park maintenance or capital improvements.

GOAL :

Create quality parks, open space, and recreation opportunities that are accessible to all ages and abilities.

STRATEGY 6

Strengthen partnerships with regional, county, and local agencies and organizations.

LOCAL ACTIONS:**PARTNERSHIP & COLLABORATION**

- Strengthen relationships with St. Clair County.
- Establish relationship with Metro East Park and Recreation District (MEPRD) to evaluate opportunities to expand recreation programming and facilities in Columbia.
- Convene discussions with Monroe County and its municipalities to explore opportunities to develop a local recreation district.
- Expand the existing relationship with the Columbia Athletic Association (CAA) to increase joint-use facilities and enhance recreation programming.
- Maintain the existing relationship with Columbia Blue Jays and strengthen relationships with Columbia Soccer Club and CREW Soccer Club to ensure ongoing youth sports programming.

1

2

3

4

5

6

7

8

9

GOAL E:

Create quality parks, open space, and recreation opportunities that are accessible to all ages and abilities.

STRATEGY 7

Establish a Parks & Recreation Department.

LOCAL ACTIONS:



EDUCATION & OUTREACH

- Convene elected officials and stakeholder discussions to explain the need for a dedicated department and provide opportunity for community input.



PRACTICE IMPROVEMENTS

- Reference the National Recreation and Park Association and Trust for Public Land for guidance, resources, toolkits, and best practices related to establishing a robust department.
- Establish an annual budget for park system management, operations, and programming.
- Evaluate full-time and part-time staffing needs and commensurate salaries to properly manage the department.



PLAN DEVELOPMENT

- Update the Parks Master Plan to serve as a guiding document for the department.



PARTNERSHIP & COLLABORATION

- Engage the Parks & Recreation Advisory Board in the development of the department.



1

2

3

4

5

6

7

8

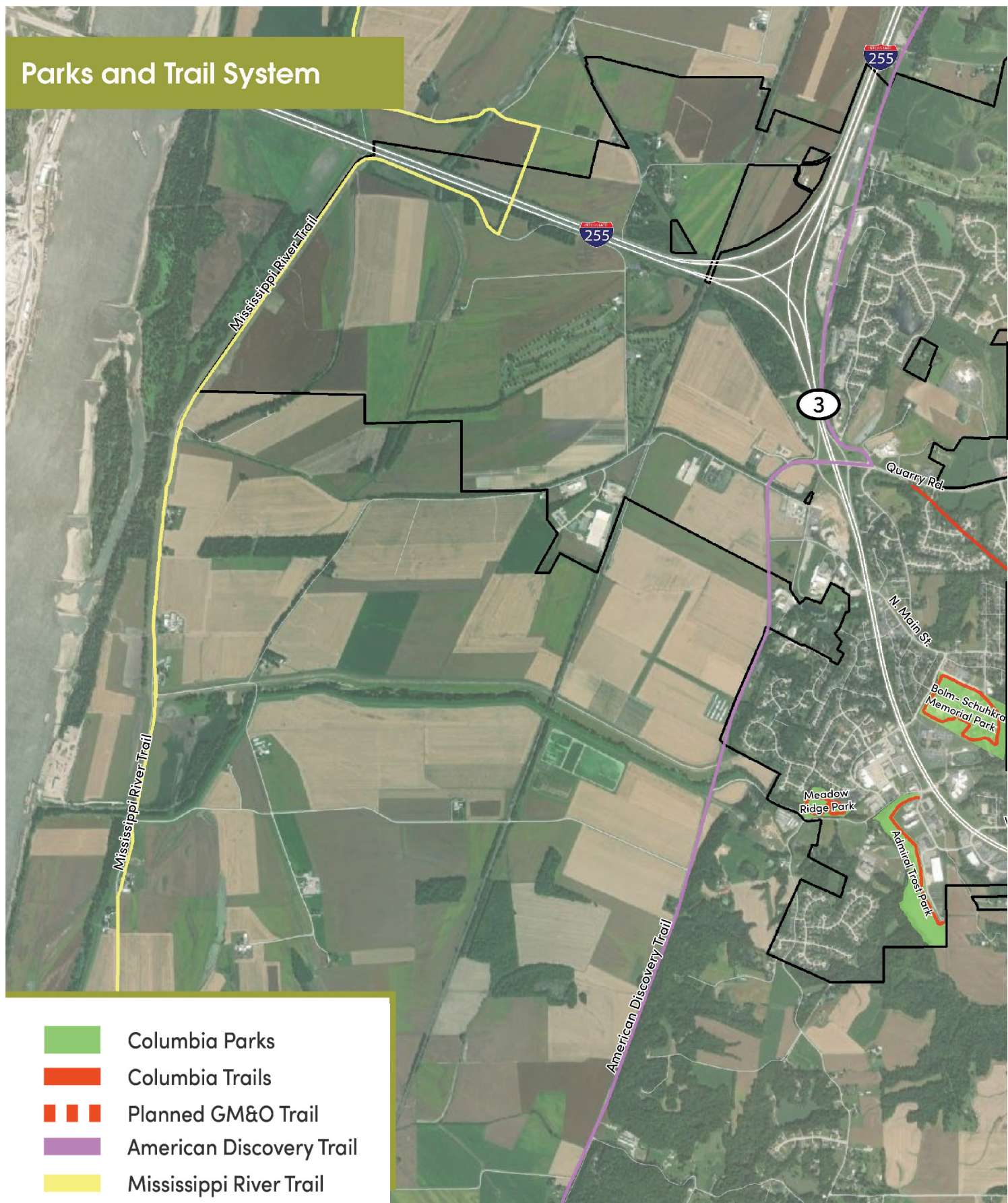
9

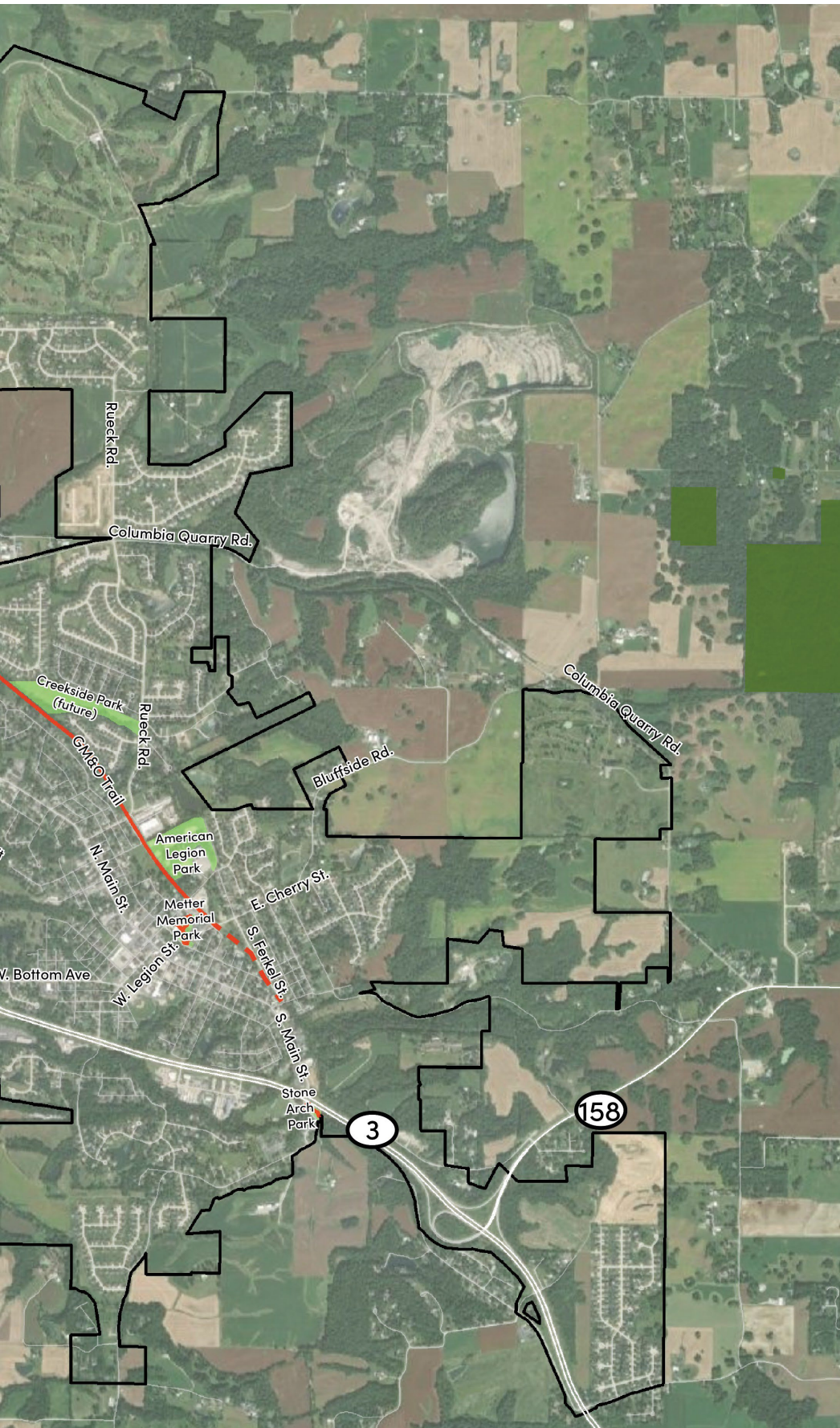


PARKS AND RECREATION CAPITAL IMPROVEMENTS PLAN (CIP)



Parks and Trail System





The planning team conducted an assessment in May 2022 of the Columbia park system, including a Parks & Facilities Inventory and Recreation Program Analysis. The Parks & Facilities Inventory captured the general state and condition, compatibility with neighborhoods, overall aesthetics and design, safety and security, public access, and program capacity. The Recreation Program Analysis evaluated existing recreation programming and overall alignment with community needs. These assessments resulted in a series of potential actions related to enhanced maintenance and operations for each individual park within the Columbia system.

At the FestiFall Interactive Community Event in October 2022, the Columbia community provided input related to the potential actions. This input directly resulted in the prioritization of these maintenance and operation actions by the Park & Recreation Advisory Board at their November 2022 meeting.

This process culminated with the development of the Park & Recreation Capital Improvement Plans (CIP) for each City park on the subsequent pages. These plans include relevant information from the Parks & Facilities Inventory assessment, implementation prioritization, and identification of future park amenities to meet community desires. Each CIP serves as a guide for the City of Columbia and the Park & Recreation Advisory Board in the ongoing infrastructure, facilities, and programming improvement.

1

2

3

4

5

6

7

8

9



Note:

- The Admiral Trost Development Park Master Plan was adopted by the City of Columbia in March 2012.

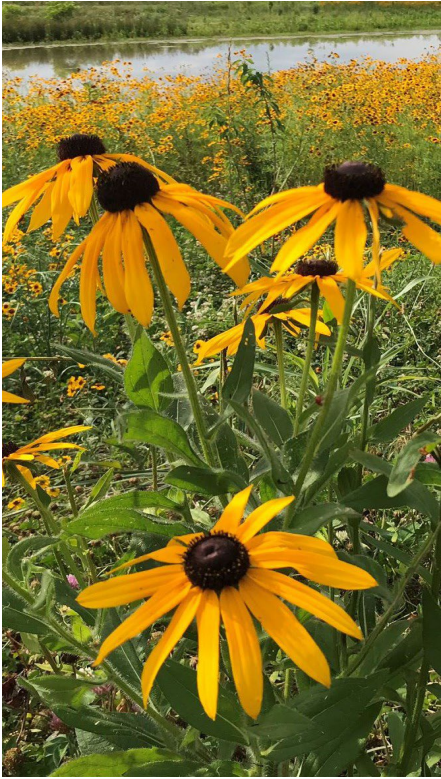
CONDITIONS			
Condition	General Infrastructure Condition	Open Lawn/Turf Area	TOTAL
GOOD	✓	✓	2
FAIR			
POOR			

RECENT AND ONGOING PROJECTS

- Paving of park trail

ACTIONS

- Development of off-leash dog park (high priority)



AMERICAN LEGION MEMORIAL PARK



- 1
- 2
- 3
- 4
- 5
- 6
- 7
- 8
- 9

CONDITIONS								
Condition	General Infrastructure Condition	Open Lawn/ Turf Area	AMENITIES					TOTAL
			Baseball / Softball Fields	Picnic Area/ Pavilion (not City property)	Playground	Restrooms (2)	Concession Stand (not City property)	
GOOD		✓	✓			✓		3
FAIR	✓				✓		✓	3
POOR				✓				1

Note:

- Two acres west of American Legion Park (across the GM&O Trail) have been donated to the City and can be used as potential future parking.
- The Concession Stand and Playground are not City property.

ACTIONS

INFRASTRUCTURE

- Restripe parking lot
- Mitigate drainage in fields and parking areas
- Create parking and traffic flow signage

AMENITY/FACILITY

- New pavilion needed
- Issue RFQ/RFP to engage firm to evaluate utilization of athletic fields to create opportunities to host youth sports tournaments.

Park and Recreation Board
 Prioritization
 Low Medium High

BOLM-SCHUHKRAFT MEMORIAL PARK



CONDITIONS																
Condition	General Infrastructure Condition	Open Lawn/ Turf Area	AMENITIES													TOTAL
			Tennis Courts (4)	Basketball Courts	Baseball / Softball Fields	Batting Cages	Football Field	Exercise Stations	Playground (1)	Restrooms (2)	Veteran' s Memorial	Cornhole Boards (8)	Roller Hockey Rink	Sand Volleyball Court	Pavilion (4)	
GOOD	✓	✓				✓		✓	✓	✓	✓	✓		✓		9
FAIR			✓	✓	✓		✓						✓		✓	6
POOR																0

ACTIONS

INFRASTRUCTURE

- ▼ Patch uneven surfacing and potholes in parking lot

AMENITY/FACILITY

- ▲ Install new playground landing materials (instead of mulch)
- ▼ Paint and re-straighten goal posts in football field
- ▼ Repaint press box (football field)
- ▲ Invest in baseball field improvements that accommodate a wider range of use than recreational play, such as concerts and events
- ▼ Update landscaping of Volleyball court and refresh sand
- ◆ Resurface Roller Hockey Rink
- ◆ Invest in new basketball hoops and reinstall hoops level in-ground
- ▲ Resurface tennis courts
- ◆ Monitor and maintain restrooms

RECENT AND ONGOING PROJECTS

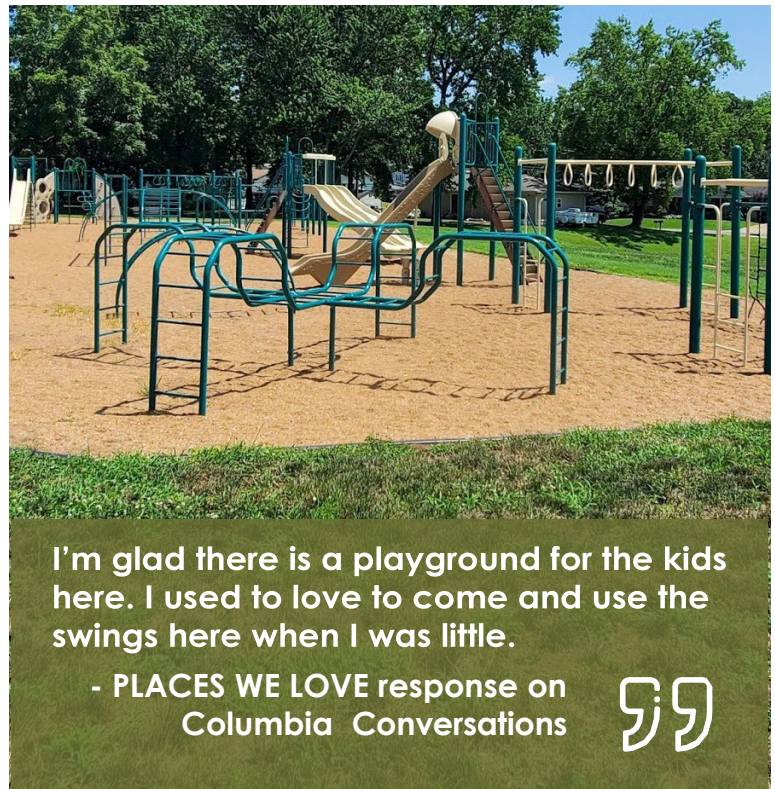
- Plan for new walking trail around park in coming years (trail cracked and patch extensively)

Park and Recreation Board
Prioritization
▼ Low ◆ Medium ▲ High



I like Bolm-Schuhkraft Memorial Park for the green space & walking trail.

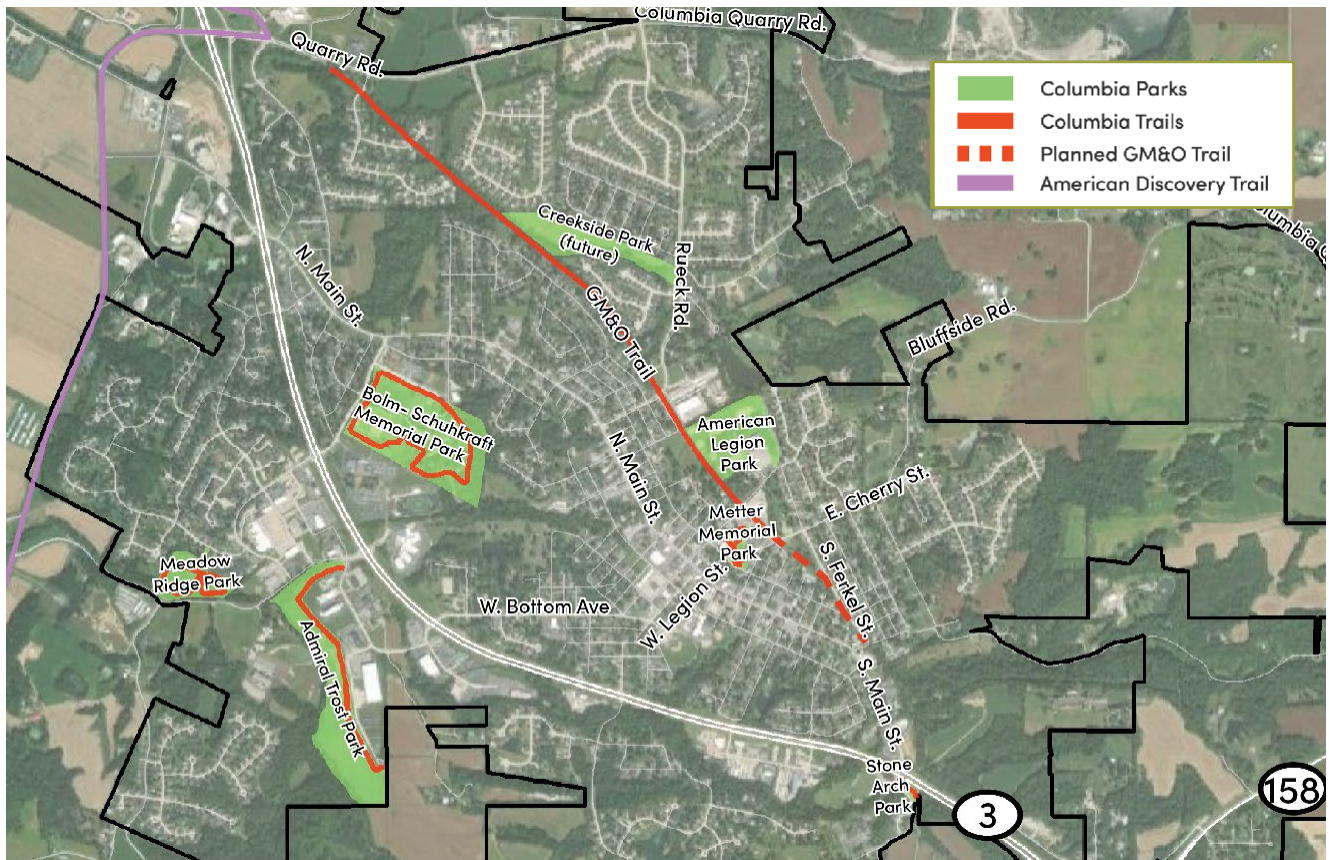
- Interactive Community Event Response



I'm glad there is a playground for the kids here. I used to love to come and use the swings here when I was little.

- PLACES WE LOVE response on Columbia Conversations





CONDITIONS			
Condition	General Infrastructure Condition	Open Lawn/Turf Area	TOTAL
GOOD	✓	✓	2
FAIR			
POOR			

ACTIONS

INFRASTRUCTURE

- ▲ Improve trail side landscaping for improved visibility, safety, and drainage conditions
- ▲ Prioritize ability to walk, bike, or wheel along trail by repaving unequal paths
- ▲ Continue implementation of 2011 Explore Columbia Plan, as funding allows.

Park and Recreation Board Prioritization		
Low	Medium	High



MEADOW RIDGE PARK



- 1
- 2
- 3
- 4
- 5
- 6
- 7
- 8
- 9

CONDITIONS						
Condition	General Infrastructure Condition	Open Lawn/ Turf Area	AMENITIES			TOTAL
			Playground	Disc Golf Course	Gazebo	
GOOD	✓		✓		✓	2
FAIR				✓		1
POOR		✓				2

ACTIONS

INFRASTRUCTURE

- ▲ Mitigate drainage of open space and park to allow better playground and disc golf play

RECENT AND ONGOING PROJECTS

- Upgrade playground surface and landing materials (not mulch) to prevent standing water and drainage issues

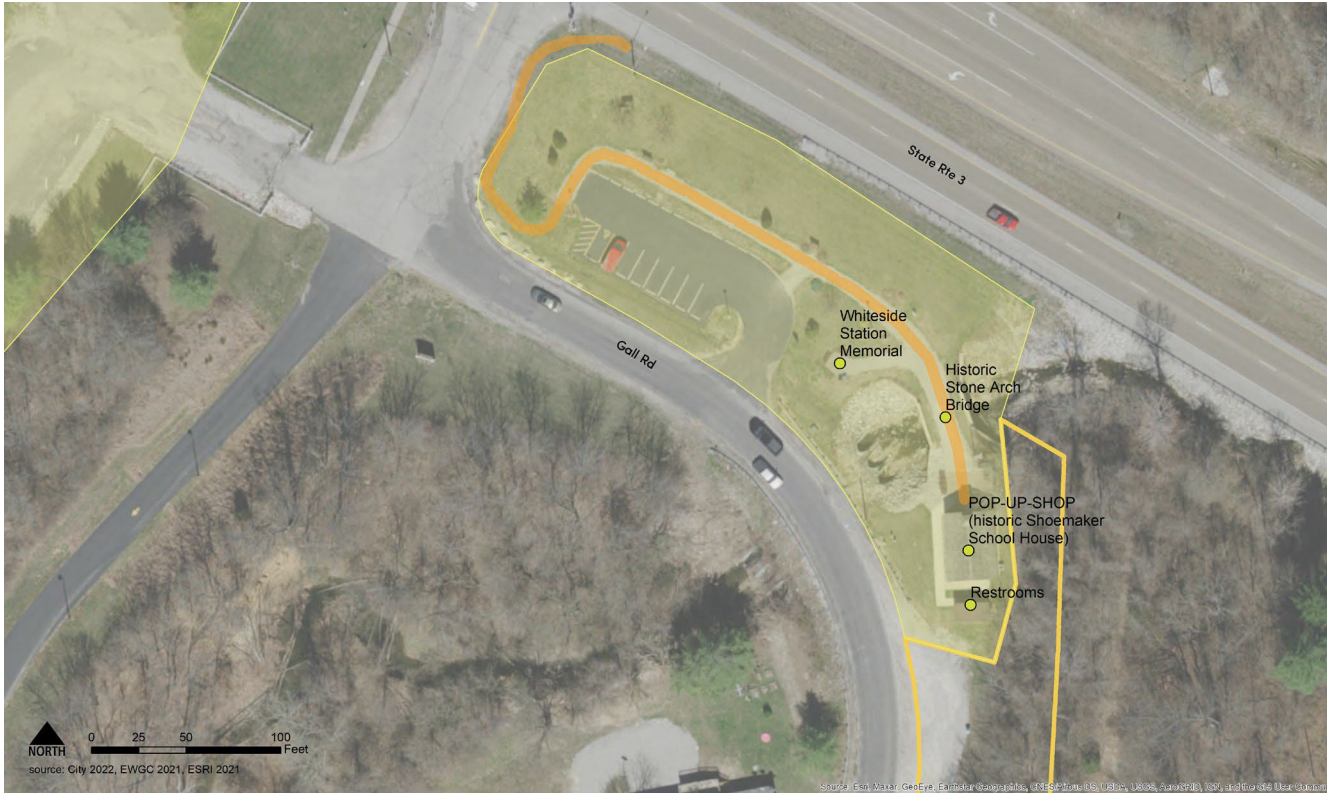
METTER MEMORIAL PARK



CONDITIONS											ACTIONS	
Condition	General Infrastructure Condition	Open Lawn/ Turf Area	AMENITIES							TOTAL	AMENITY/FACILITY	
			Pickleball Courts (4)	Basketball Courts	Scout Hut	Library Gazebo	Playground	Restrooms (1)	Playground (1)			
GOOD	✓	✓	N/A			✓	✓	✓	✓	7	▼	Resurface basketball court
FAIR			N/A	✓						1	▼	Update paint for pavilions
POOR			N/A		✓					1	◆	Renovate or replace Scout Hut with separate dedicated funding source
											PROGRAMMING	
											▼	Identify programming opportunities for Scout Hut
											▼	Identify Scout programming needs

Park and Recreation Board
 Prioritization
 ▼ Low ◆ Medium ▲ High

STONE ARCH PARK



CONDITIONS

Condition	General Infrastructure Condition	Open Lawn/Turf Area	AMENITIES				TOTAL
			Historic Stone Arch Bridge	Restrooms	Whiteside Station Memorial	Historic School House	
GOOD	✓		✓	✓	✓		4
FAIR		✓				✓	2
POOR							0

Note:

- The old schoolhouse has been converted into Columbia's small business initiative, the POP-UP SHOP.

ACTIONS

INFRASTRUCTURE

- Update and maintain landscaping

AMENITY/FACILITY

- Determine future use for schoolhouse and repair accordingly [area where bricks are bulging under windows is precarious. City is consulting with architect]
 - Pop-up shop Columbia [\$5/day] & have had 2-3 successful permit locations

RECENTLY COMPLETED

- Address electric service trenches for light poles

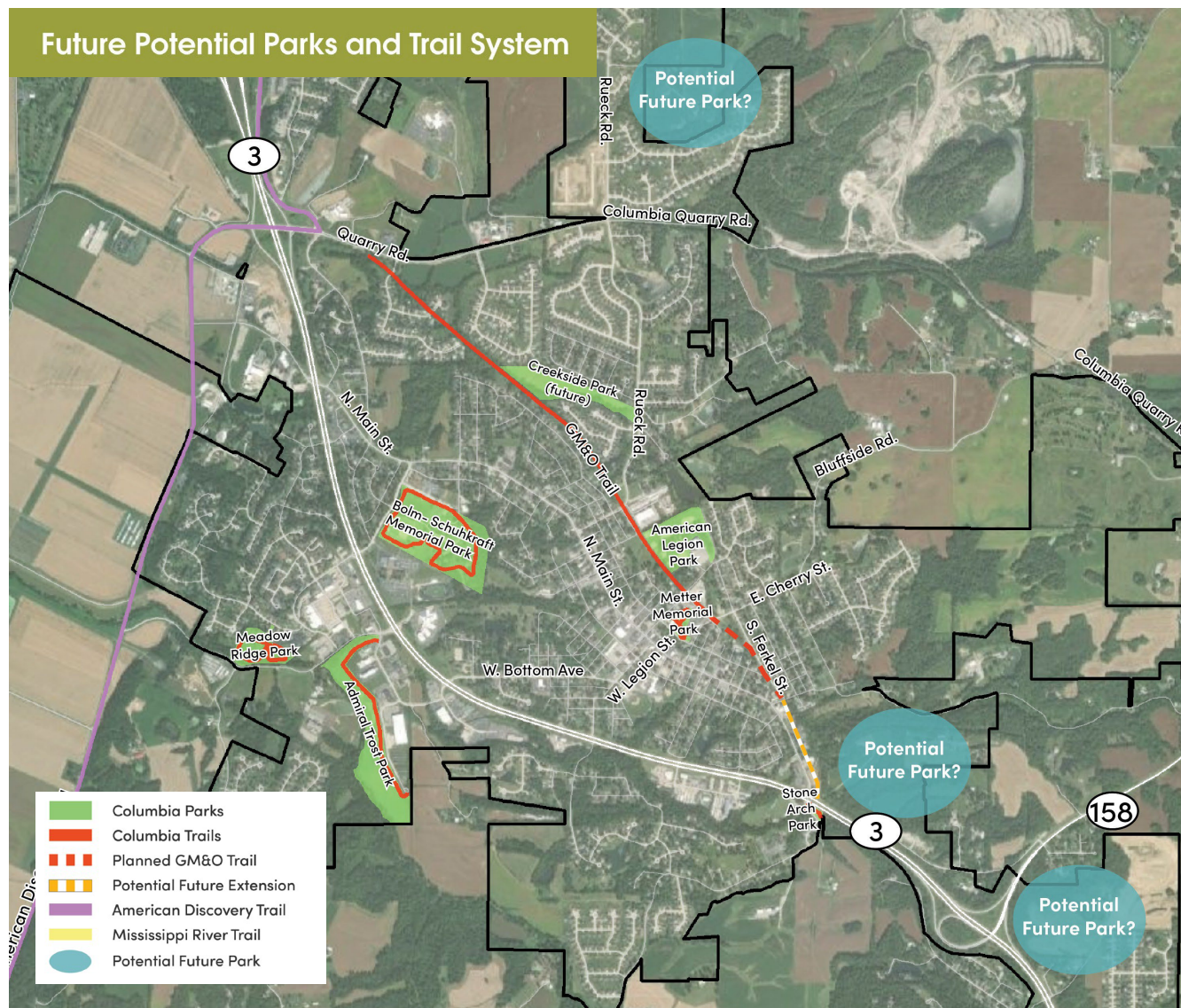
Park and Recreation Board
Prioritization
Low Medium High

FUTURE PARKS PLANNING

The community engagement input identified desires for future park and recreation amenities and programming. The Park & Recreation Advisory Board evaluated these community desires and identified potential locations for their future implementation. Additionally, the Board evaluated the overall park system and identified gaps in park development. The below map depicts the identified locations for potential new parks to ensure access and service

to all residents and neighborhoods, especially as Columbia continues to grow. Included in the development of future parks is Creekside Park, for which plans include a 1-acre lake/pond, off-street parking, picnic pavilion, playspace, and walking trail.

The chart to the right identifies potential additional amenities and their most suitable locations to reflect community feedback.



AMENITY LOCATION MATRIX

	Admiral Trost Park	American Legion Memorial Park	Bolm-Schuhkraft City Park	Meadow Ridge Park	Metter Memorial Park	Stone Arch Park	Creekside Park (Future)	Downtown
Dog Park	✓		✓	✓				
Paved Walking & Biking Trails	✓	✓		✓			✓	
Splashpad			✓		✓			✓
All inclusive playground ¹	✓						✓	
Amphitheater			✓					
Sports Fields	✓	✓						
Eco-Tourism	✓			✓			✓	
Pickleball Courts ²			✓	✓				
Disc Golf							✓	
Community Center								✓
Outdoor Games & Activities	Provide space in each park for low-cost, small-area outdoor games. Change courts and equipment periodically for a fresh mix. Some common examples are tetherball, foursquare, and horseshoes. Other options include cornhole, washers, and gagaball.							
Notes								
¹ Playgrounds in identified parks should be all-inclusive. All playgrounds should include one or more pieces of inclusive equipment.								
² Courts may be designed and equipped for dual-sport play (pickleball and tennis).								

✓ = Future park amenity locations recommended by Park & Recreation Advisory Board

COMPREHENSIVE PLAN 2024 LOOKING TO THE FUTURE

